

# ChangeLab Solutions



## Growing Healthier Schools:

Bringing Agriculture into Classrooms,  
Cafeterias, and Schoolyards

*Recorded on March 12, 2015*



# ChangeLab Solutions



**Quang "Q" Dang, JD**  
Program Director



**Hannah Sheehy, MPH**  
Policy Analyst

# Today's guest speakers



**Kathryn Mathewson**

School Garden Sanitarian /  
Health Educator

Arizona Department of Health Services



**Moses Thompson**

Sustainability and School Garden  
Program Coordinator

University of Arizona/Tucson Unified  
School District

# Agenda

1. Introduction
2. Healthy Hunger-Free Kids Act (HHFKA)
3. What is Farm-to-School?
4. School gardens
5. Local food purchasing
6. School wellness policies



# ChangeLab Solutions

**We partner with state and local leaders to improve health in communities, especially the underserved.**

**We research legal and policy questions, draft policy language, and train community leaders to put these ideas to work.**



# **Poll:**

**What was your favorite fruit or vegetable when you were a kid?**

# WHY SCHOOLS?

- Key part of civic life
- Health and attendance
- Achievement
- Leaders in PSE change



# The Healthy, Hunger-Free Kids Act (HHFKA)





# MEAL STANDARDS



# COMPETITIVE FOODS





# SCHOOL WELLNESS POLICIES

# HHFKA IN ARIZONA



# HHFKA IN ARIZONA



## *Before Smart Snacks:*

“The Arizona Department of Education **will not allow any exemption for the sale of food and/or beverages that do not meet the competitive food standards** for the purpose of conducting an infrequent school-sponsored fundraiser for elementary, middle and junior high schools.”

## *After Smart Snacks:*

Arizona Department of Education will continue to uphold the current zero exemption policy in effect for K-8 and **will extend this policy to all grades, “K-12”**.

Questions?

# Farm-to-School



# What is Farm-to-School?





# Farm-to-School in Arizona



**53**  
districts

**552**  
schools

**384,925**  
children

Source: Farm-to-School Census, USDA <http://www.fns.usda.gov/farmtoschool/census#/state/az>

# Farm-to-School Activities

## CORE ELEMENTS OF **FARM** *to* **SCHOOL**



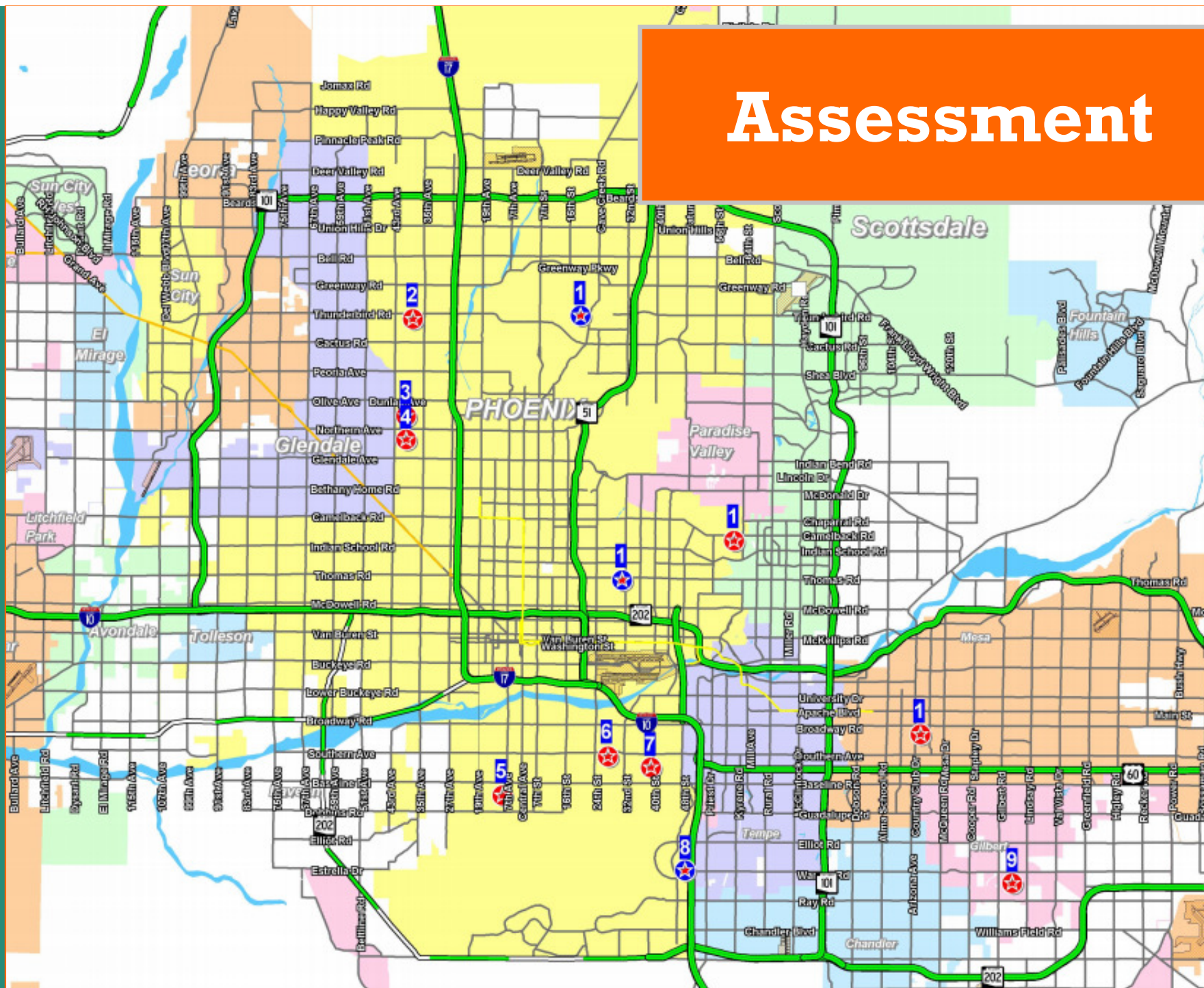


Education

# School Gardens



# Assessment



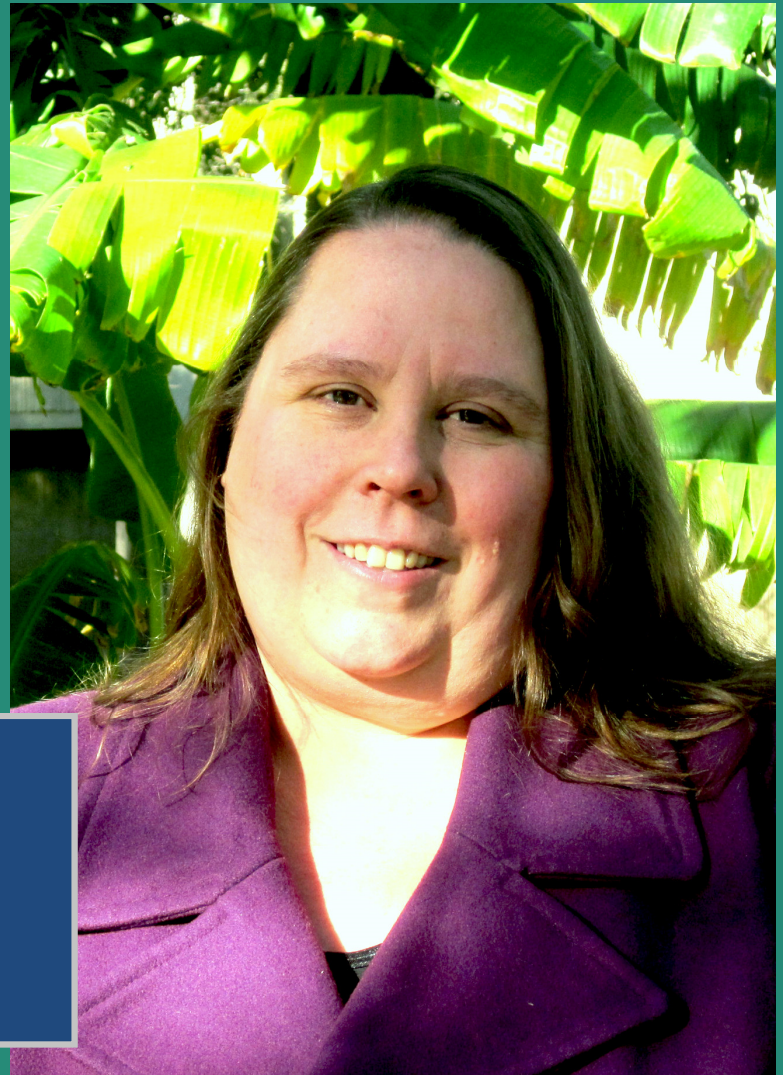
# Existing Policies

- ✓ Gifts
- ✓ Donations
- ✓ Volunteers

**Breaking ground!**



# School Garden Food Safety 101



**Kathryn Mathewson**  
School Garden Sanitarian and  
Health Educator



# ADHS School Garden Program

## Growing Healthier Schools



Clifton Garden #1

**Kathryn Mathewson, MAdmin, RS**  
**Arizona Department of Health Services**  
**Office of Environmental Health**  
**Food Safety & Environmental Services Program**



*Health and Wellness for all Arizonans*

# What is this program about?

- Arizona Food Code Requirements
  - USDA GHP/GAP
    - US Dept of Agriculture Good Handling Practices/Good Agricultural Practices
  - FDA FSMA
    - Food and Drug Administration Food Safety Modernization Act
- Safe, fresh Produce to students



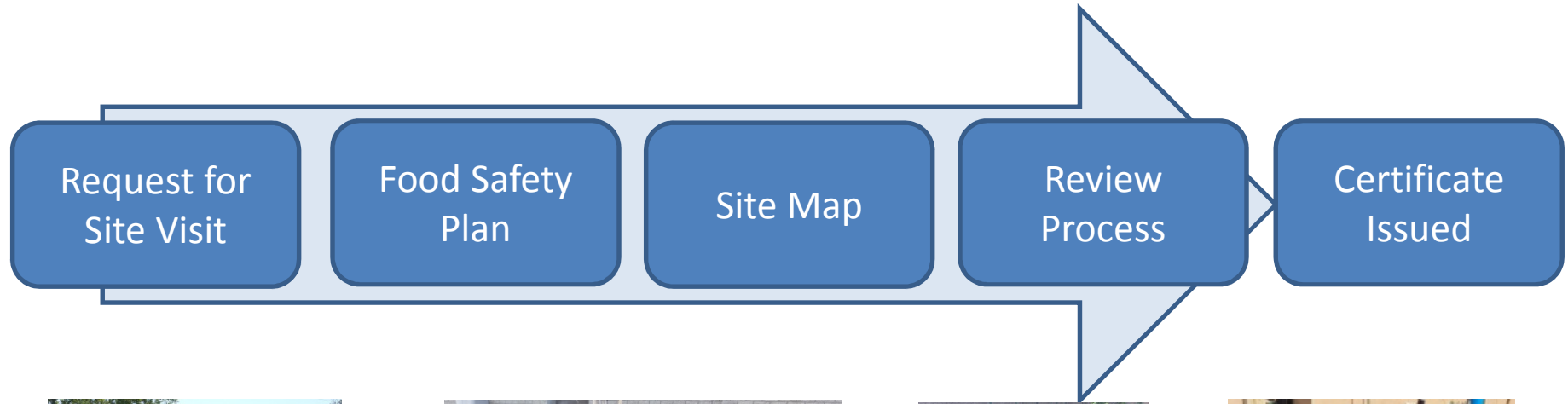
Pima County Juvenile Detention Facility #2



Verde Valley School #3



# Enrollment Process



Orme School #4



Yavapai County Juvenile  
Detention Facility #5



The Haven #6



Simonton Garden #7



# Food Safety Plan

- Policy
  - Addresses: Who, What, When, and Where
- Procedure
  - Addresses: How



Rover Elementary #8

Addresses the 5 Garden Food Safety Risk Factors

- Location
- Water Source
- Soil Composition and Amendments
- Gardener Personal Hygiene
- Produce Contact Surfaces



Manzo Garden #9



# Previous Challenges

- Incomplete applications
  - Writing policies (food safety plan)
  - Follow through
- Construction materials
  - Railroad ties
  - Fencing not screened or complete

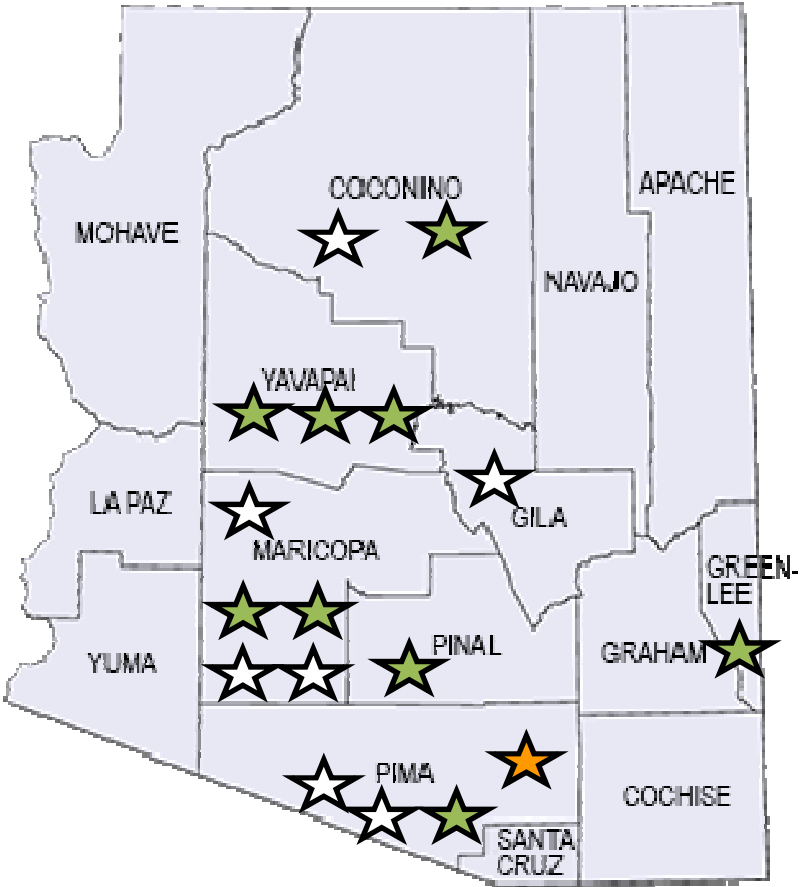


Borton #10



Edible Ajo #11

# Gardens



-  Permitted
-  5 permitted gardens
-  Plans are being reviewed

Total:  
 14 Permitted  
 7 Review Process



# School Gardens

- Educational
  - Teach students' the fruits and vegetables that can be grown in their area
  - Teach students' how to plant, care and harvest crops
- Beneficial
  - Encourage healthy eating
  - Build students' self-esteem
  - Give students' life skills



The Garden Kitchen #12



John B Wright #13



Star School #14

Kathryn Mathewson, MAdmin, RS  
Arizona Department of Health Services  
School Garden Sanitarian/Health Educator  
602-364-3952

[kathryn.mathewson@azdhs.gov](mailto:kathryn.mathewson@azdhs.gov)



*Health and Wellness for all Arizonans*



**Questions?**



# Sustainability



# Q & A with...



**Moses Thompson**  
**Manzo Ecology Program**















Questions?

# ChangeLab Solutions

## Playing Smart

Maximizing the Potential of School and Community Property  
Through Joint Use Agreements



nplan NATIONAL POLICY & LEGAL ANALYSIS NETWORK  
TO PREVENT CHILDHOOD OBESITY

ChangeLab Solutions  
Law & policy innovation for the common good.



ChangeLab Solutions  
Law & policy innovation for the common good.

nplan NATIONAL POLICY & LEGAL ANALYSIS NETWORK  
TO PREVENT CHILDHOOD OBESITY

## Checklist for Developing a Joint Use Agreement (JUA)

Many communities lack safe, adequate places for children and their families to exercise and play. Schools might have a variety of recreational facilities – gymsnasiums, playgrounds, fields, courts, tracks – but many districts close their property to the public after school hours because of concerns about costs, vandalism, security, maintenance, and liability in the event of injury.

Most states currently have laws that encourage or even require schools to open their facilities to the community for recreation or other civic uses. Nonetheless, school officials may be reluctant to do so, cautious about the expense in times of increasingly tight budgets. The good news is that city, county, and town governments can partner with school districts through what are known as joint use agreements to address these concerns.

A joint use agreement (JUA) is a formal agreement between two separate government entities – often a school and a city or county – setting forth the terms and conditions for shared use of public property or facilities. JUAs can range in scope from relatively simple (e.g., opening school playgrounds to the public outside of school hours) to complex (allowing community individuals and groups to access all school recreation facilities, and allowing schools to access all city or county recreation facilities).<sup>1</sup>

Just as there is no one model JUA, there is no single method to develop an agreement. Successful JUAs require a lot of thought, effort, and cooperation to reach agreement on a range of issues.

This checklist is designed to identify issues for the parties to consider when developing a JUA to share existing facilities. Not all of the issues presented will be applicable in all situations, and there may be issues unique to a community that are not included here.

We have developed four model JUAs as templates for communities to use to develop their own agreements. See all our joint use products online at [www.changelabsolutions.org](http://www.changelabsolutions.org).

[www.changelabsolutions.org](http://www.changelabsolutions.org)

March 2009

[changelabsolutions.org](http://changelabsolutions.org)

# Local Resources

- **Nutrition Education:**

<http://cals.arizona.edu/agliteracy/lessons>

<http://www.azed.gov/health-nutrition/school-gardens/>

- **School Gardens:**

<http://www.azdhs.gov/phs/oeh/fses/school-garden/index.php?pg=resources>

# Local Resources



<http://sgdschoolgardens.arizona.edu/>



[http://extension.arizona.edu/  
master-gardeners](http://extension.arizona.edu/master-gardeners)

# Local School Food



# Poll:

What does “local” mean to you,  
when it comes to food?

# WHO DEFINES LOCAL?





# Definitions

- Preference
- Unnecessary restriction of free and open competition
- Unprocessed
- Inherent character
- Threshold

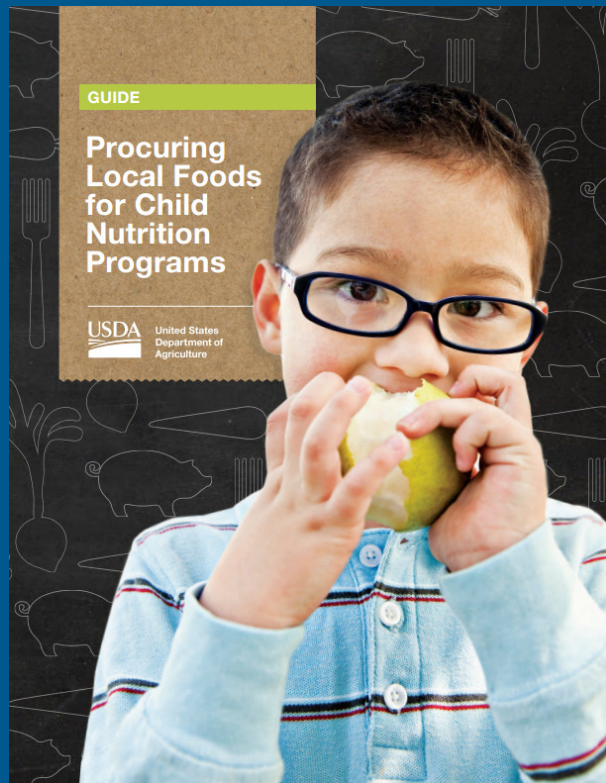
# Benefits of Local Food



*Read the interview:*

<http://www.farmentoschool.org/news-and-articles/farm-to-school-in-arizona-q-a-with-linda-rider>

# RESOURCES



[http://www.fns.usda.gov/sites/default/files/F2S\\_Procuring\\_Local\\_Foods\\_Child\\_Nutrition\\_Prog\\_Guide.pdf](http://www.fns.usda.gov/sites/default/files/F2S_Procuring_Local_Foods_Child_Nutrition_Prog_Guide.pdf)



[http://www.fns.usda.gov/sites/default/files/FOCUS\\_GP\\_Primer.pdf](http://www.fns.usda.gov/sites/default/files/FOCUS_GP_Primer.pdf)

# MORE RESOURCES

## Policy examples:

- Good Food Pledge, City of LA / LAUSD  
[http://ens.lacity.org/mayor/villaraigosa/mayorvillaraigosa331283141\\_10242012.pdf](http://ens.lacity.org/mayor/villaraigosa/mayorvillaraigosa331283141_10242012.pdf)
- Proposed statewide legislation in VA:  
<http://leg1.state.va.us/cgi-bin/legp504.exe?101+ful+HB423+pdf>

# School Wellness Policies

- Farm-to-school
- Nutrition
- Physical activity
- Health education
- Safe & healthy school
- Student wellness services
- Staff wellness
- After-school



ALLIANCE FOR A  
**HEALTHIER  
GENERATION**



## Healthy Schools Program

[https://www.healthiergeneration.org/take\\_action/schools/wellness\\_councils\\_policies](https://www.healthiergeneration.org/take_action/schools/wellness_councils_policies)

Questions?

# ChangeLab Solutions

## RESOURCES

- **Establishing a Farm-to-School Program**

<http://changelabsolutions.org/publications/establishing-farm-school-program>

- **What is a Joint Use Agreement?**

[http://changelabsolutions.org/sites/default/files/JointUse\\_FactSht\\_FINAL\\_20130425.pdf](http://changelabsolutions.org/sites/default/files/JointUse_FactSht_FINAL_20130425.pdf)

- **How to Enforce a Wellness Policy**

<http://changelabsolutions.org/publications/enforce-wellness-policy>





[www.eatwellbewell.org](http://www.eatwellbewell.org)

# USDA NON-DISCRIMINATION STATEMENT

The U.S. Department of Agriculture prohibits discrimination against its customers, employees, and applicants for employment on the bases of race, color, national origin, age, disability, sex, gender identity, religion, reprisal, and where applicable, political beliefs, marital status, familial or parental status, sexual orientation, or all or part of an individual's income is derived from any public assistance program, or protected genetic information in employment or in any program or activity conducted or funded by the Department. (Not all prohibited bases will apply to all programs and/or employment activities.)

If you wish to file a Civil Rights program complaint of discrimination, complete the USDA Program Discrimination Complaint Form, found online at [www.ascr.usda.gov/complaint\\_filing\\_cust.html](http://www.ascr.usda.gov/complaint_filing_cust.html), or at any USDA office, or call (866) 632-9992 to request the form. You may also write a letter containing all of the information requested in the form. Send your completed complaint form or letter to us by mail at U.S. Department of Agriculture, Director, Office of Adjudication, 1400 Independence Avenue, S.W., Washington, D.C. 20250-9410, by fax (202) 690-7442 or email at [program.intake@usda.gov](mailto:program.intake@usda.gov).

Individuals who are deaf, hard of hearing or have speech disabilities may contact USDA through the Federal Relay Service at (800) 877-8339; or (800) 845-6136 (Spanish).

For any other information dealing with Supplemental Nutrition Assistance Program (SNAP) issues, persons should either contact the USDA SNAP Hotline Number at (800) 221-5689, which is also in Spanish or call the Arizona Nutrition Network Hotline; in Maricopa County call 602-542-9935, outside of Maricopa County call 1-800-352-8401.

# **DISCLAIMER**

**The information provided in this discussion is for informational purposes only, and does not constitute legal advice. ChangeLab Solutions does not enter into attorney-client relationships.**

**ChangeLab Solutions is a non-partisan, nonprofit organization that educates and informs the public through objective, non-partisan analysis, study, and/or research. The primary purpose of this discussion is to address legal and/or policy options to improve public health. There is no intent to reflect a view on specific legislation.**

**© 2015 ChangeLab Solutions**

# Thank you!

